

PRIORITY PROJECT 13 HUNTINGTON PARK IMPROVEMENTS (1-6)

Huntington Park is an urban refuge for wildlife that plays an important historical, interpretive and practical role in the life of the river and Lower Falls. Constructed by Avista Corporation as part of the Monroe Street Generating Facility Redevelopment Project in 1992, it surrounds an operating generation station and provides a critical transition between the urban texture of Downtown and the Gorge area. Avista has made over \$280,000 in improvements to the park resulting in the type of critical balance between development, conservation and access that the Strategic Master Plan strives to achieve.

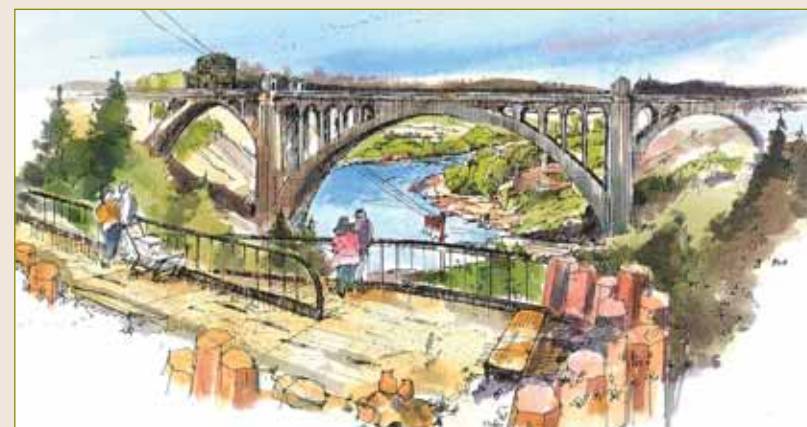
Connecting Riverfront Park to Huntington Park with the creation of a pedestrian interpretive plaza in the current location of the city hall parking lot will result in the opening of a grand vista of the river, Gorge and Falls.



Fountains, public art and wayfinding signage will tell the story of the City's connection and history with the Spokane Falls.

Creating a pedestrian connection from the plaza into the heart of Huntington Park will enhance the visibility of the park and provide the critical access to the Lower Falls and river. The creation of this connection needs to ensure continued access to Avista's facilities, stability of the existing slopes and careful evaluation of appropriate and cost effective levels of ADA access.

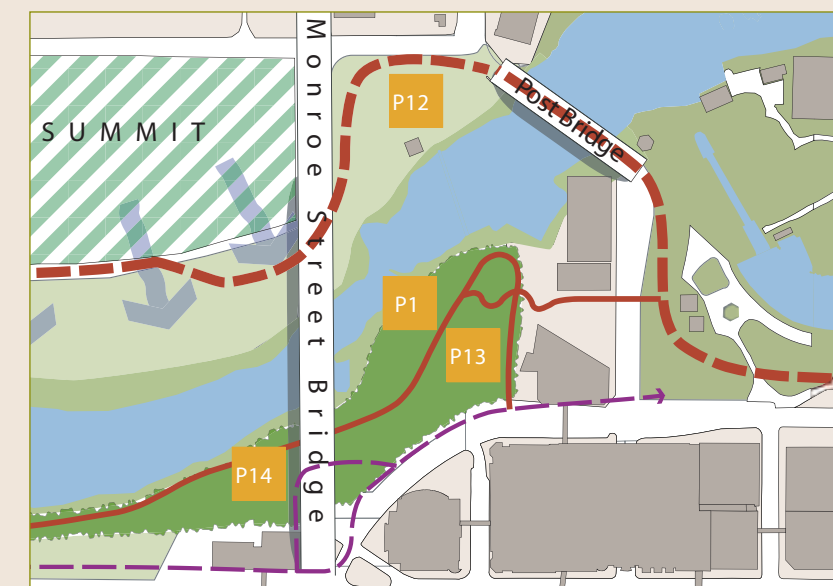
Huntington Park Improvements will consist of historic features and exhibits associated with the Spokane Falls, salmon harvest, tribal gatherings, and power generation. These themes will link to the other Gorge area interpretive themes of railroads, mills, and the rise of an industrial city at the Falls. Development of the interpretive plan will require a careful balance between linking the diverse history of the site with consideration for clarity of the major themes of tribal history and current use in power generation. An interpretive area centered in



The drawing shows the "Grand Entry" staircase design, which is one of the four specific projects that were part of the original Concept Plan. Source: Friends of the Falls

Huntington Park will further emphasize the evolution of the city at the Falls, telling the story of past uses, industries and current environmental issues.

Future improvements may include improved pedestrian access, collaborative identification and preservation of viewsheds, connections to Downtown and Riverfront Park, artwork (spearfishing sculpture), interpretation of remnant foundations and future enhancements of the park including new circulation, plazas and amenities. Future design and implementation will require careful coordination with Avista Corporation to ensure compatibility with the Monroe Street Hydroelectric Development's operation and maintenance needs, and compliance with the FERC license.



Huntington Park has great access to Downtown Spokane and City Hall.

PRIORITY PROJECT 14 MONROE STREET BRIDGE SOUTH UNDERCROSSING (PB-4)

There are currently no safe trail connections between Huntington Park and Peaceful Valley.

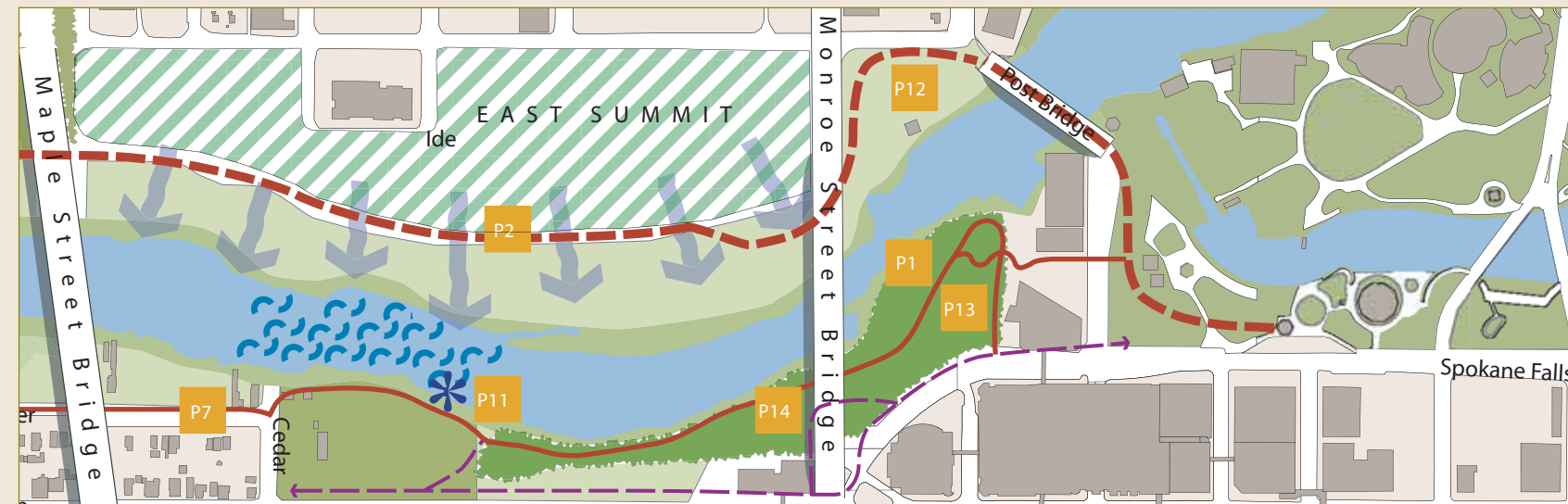
There are two proposed trail alignments:

The first trail alignment is from the new Monroe Street Bridge Overlook on Spokane Falls Boulevard, under the southern most arch of the bridge to the Spokane Club property and Main Street. The installation of the trail under the south arch of the Monroe Street Bridge will separate pedestrian and vehicular traffic at Monroe Street increasing pedestrian safety and improving vehicular travel.

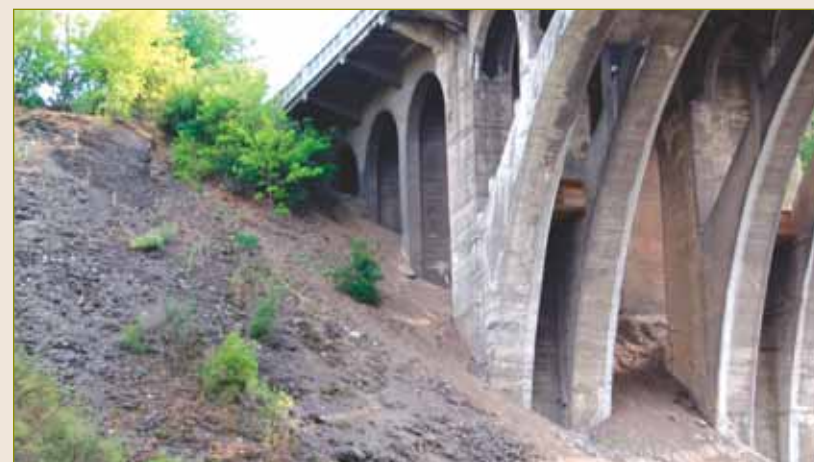
The second is from the base of Huntington Park under the Monroe Street Bridge along the southern edge of the river using slope modifications and retaining walls. The trail would be a dramatic connection between the Gorge area and Downtown Spokane.

These crossings will provide a critical link of the pedestrian loop that is direct and safe. They will connect Peaceful Valley, Glover Field, Huntington Park, Riverfront Park and Downtown.

These projects are separate from the rehabilitated Monroe Street Bridge, but will need to be integrated in a sensitive way that contribute to the use of the bridge.



Monroe Street Bridge Undercrossings



The southernmost arch, pictured above, will be excavated to provide a safe connection under the bridge.



Aesthetic features associated with both hardscapes (retaining wall, bridge, etc.) and softscapes (fill slopes, etc.) should be incorporated into the crossing to make it a desirable and safe connection.



Security lighting may be advisable due to the lack of penetrable light during portions of the day and for the safety of nighttime users.

PRIORITY PROJECT 15 HIGH BRIDGE PARK MASTER PLAN DEVELOPMENT (R-7)

High Bridge Park is envisioned as a family-friendly park with both passive and active recreational opportunities for all age groups.

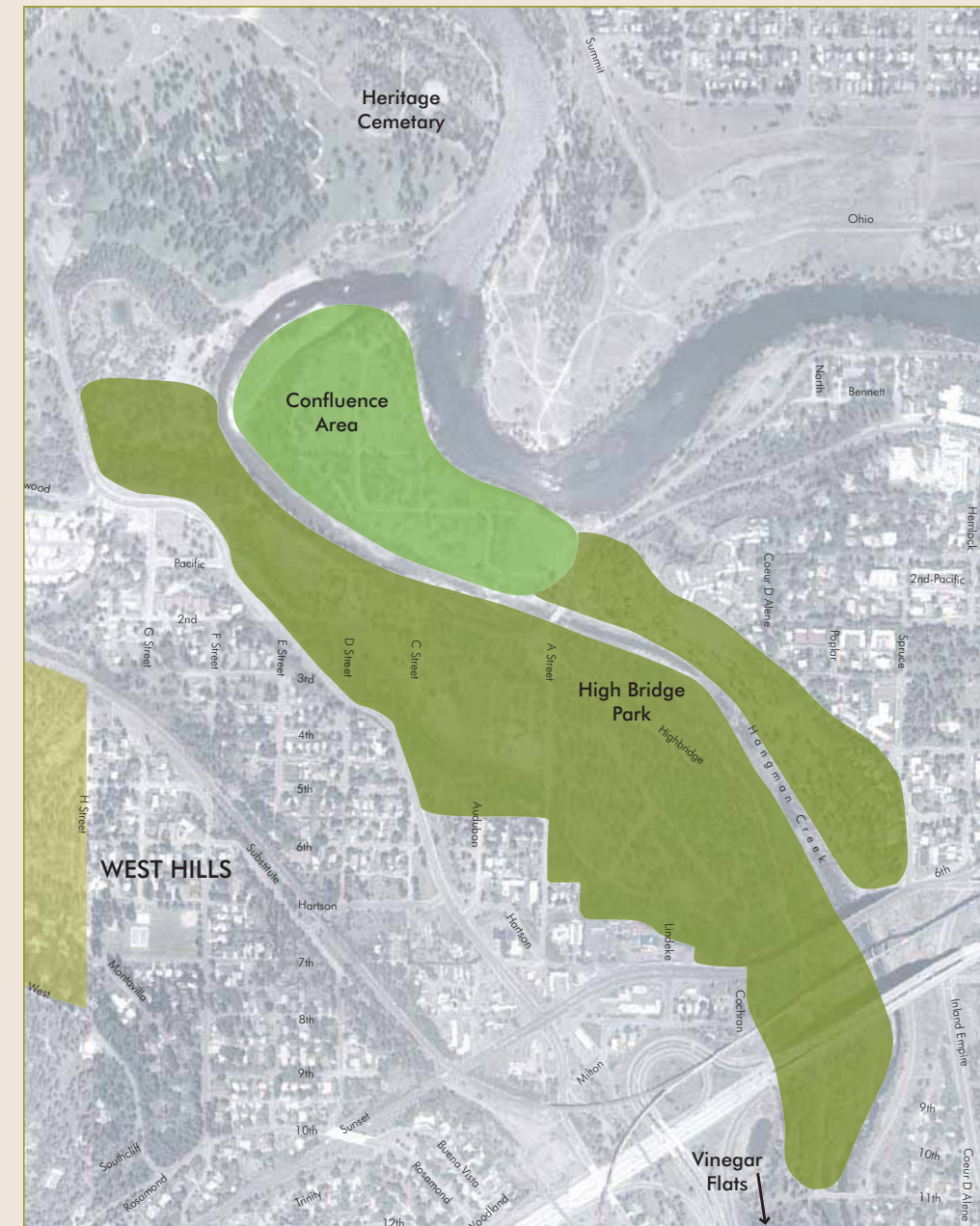
Currently, High Bridge Park is relatively unprogrammed. The majority of the park is used for group gatherings, passive recreation and conservation.

Neighborhood concerns include improved trail access, maintenance, safety provisions and additional amenities for family outings.

With input from the community, the Spokane Parks Department and Park and Recreation Board will be the lead agency to create a Master Plan for this 200-acre park.



The numerous high-quality resources that High Bridge Park has to offer can be improved and enhanced with a Master Plan, including the protection of sensitive species areas around Hangman Creek.



High Bridge Park Area



High Bridge Park from above



High Bridge Park Pavilion

